

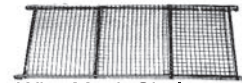
Wire Cage Set
#900606



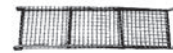
Metal Base
#900605



Wire Latches x2
#900607



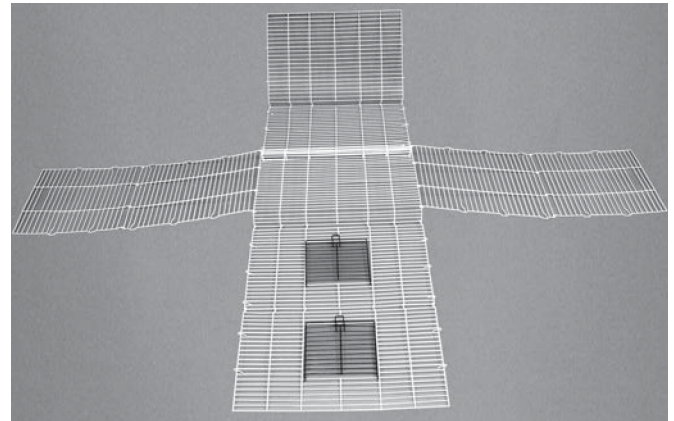
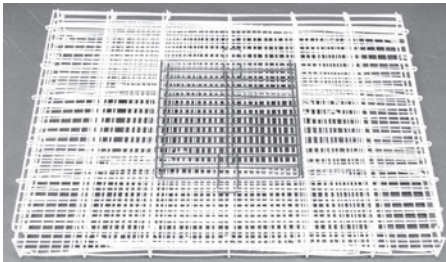
Wire Mesh Shelves x3
#900608



Wire Mesh Ramps x3
#900609

Step 1

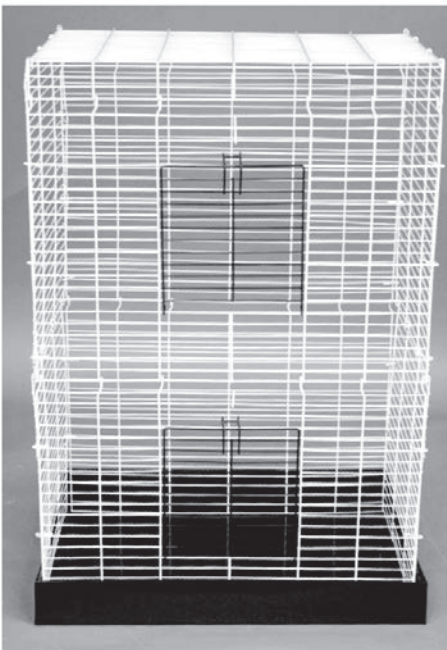
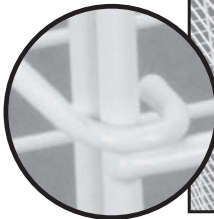
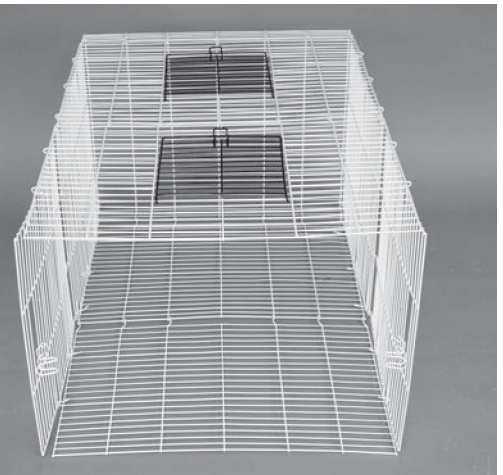
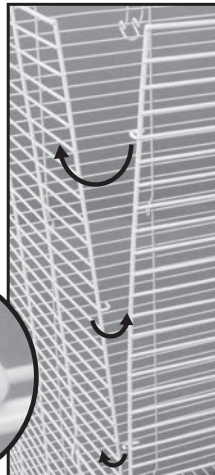
Remove the Wire Cage Set and lay on a flat surface with the doorway facing up. Carefully unfold the front, back and side panels.



Step 2

Lock the right and left side panels to the front and back panels by weaving together the wire hooks from the top of the cage to the bottom.

Special Note: If the wire hook becomes bent during shipping, carefully pry it open until the hook fits the wire loop.



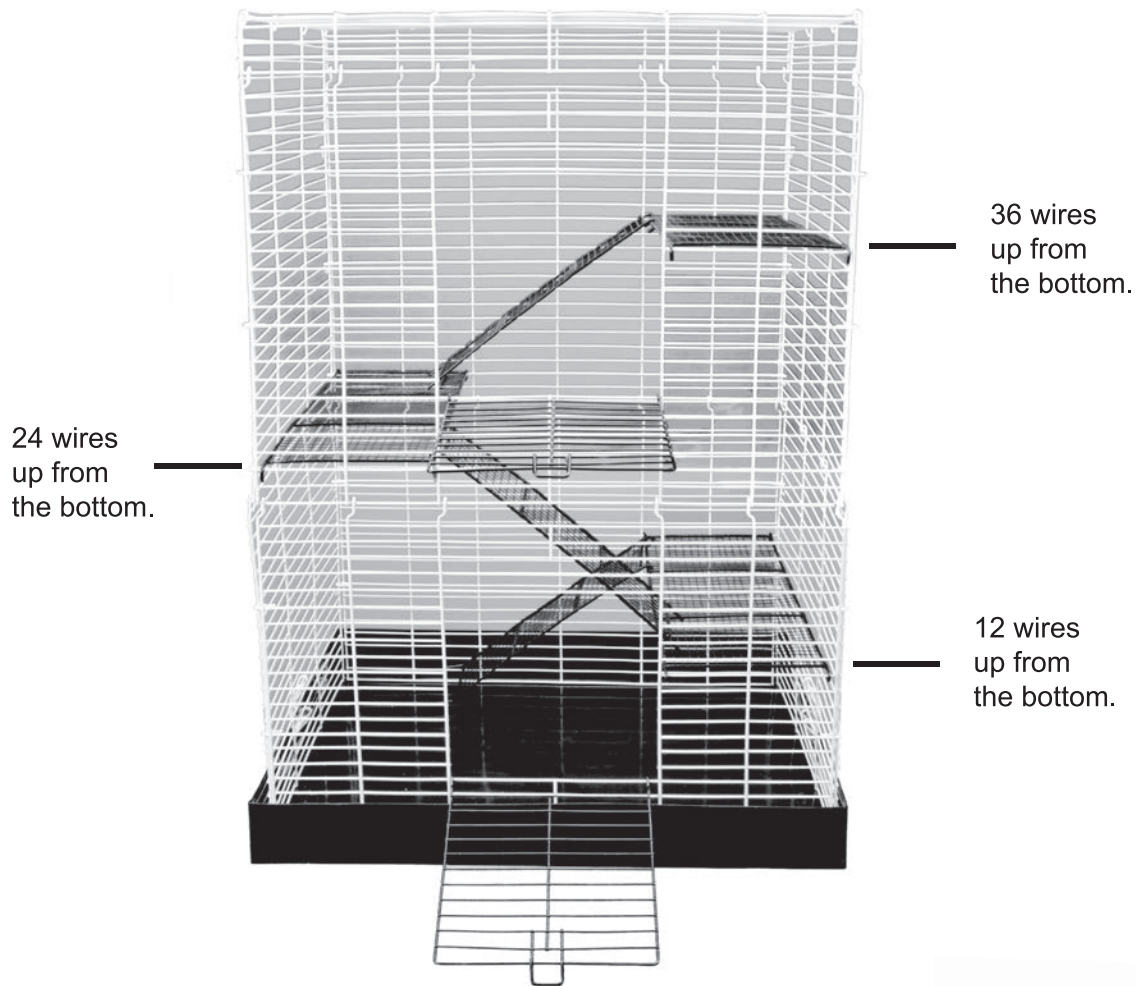
Step 3

Turn the Wire Cage Set upright and place it on top of the Metal Tray. Lock the Wire Cage Set to the metal Tray using the side wire latches. The side wire latches attach to the Wire Cage Set on the 6th wire up from the bottom.



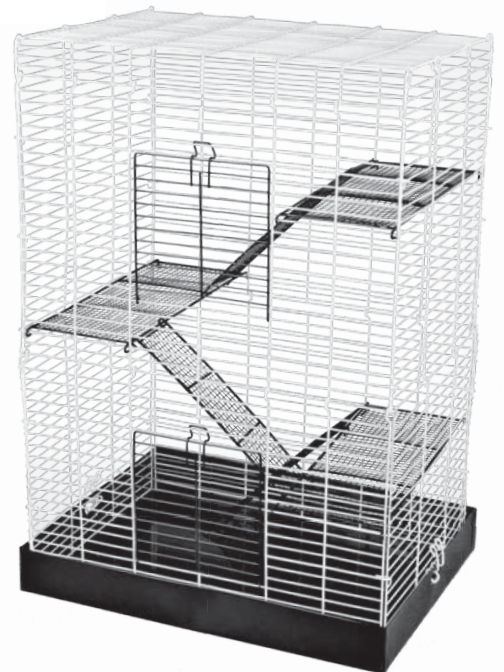
Step 4

Place the first Wire Mesh Shelf on the 12th wire from the bottom of the right side, place the 2nd wire shelf on the 24th wire from the bottom on the left side, and place the last shelf on the 36th wire from the bottom on the right side.



Place the Wire Mesh Ramps through the door and attach to each shelf so they lead from the bottom to the top of the cage. Close the doors and safely secure with the locking latch behind the horizontal wire bar.

Assembly Complete!



ware cares™

We care about the carbon pawprint we leave as a company and are committed to using recycled and recyclable material in the manufacturing of our packaging and pet products.

If you have any questions or concerns about this product contact our customer service department at 1-800-295-2243 Mon-Fri 8:00 - 4:00 MST or email us at hello@warepet.com

Revised: 11-21-2019

#30000663

Ware Mfg., Inc. claims copyright protection under U.S. and International Copyright Law in the attached sculptural work and in the content of this packaging. Copyright ©2019 Ware Mfg., Inc. All rights reserved.