

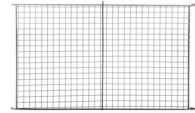
Wire Cage Set
#900613



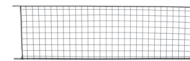
Metal Base
#900612



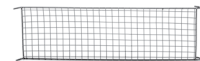
Wire Latches x2
#900614



Wire Mesh Shelves x2
#900615



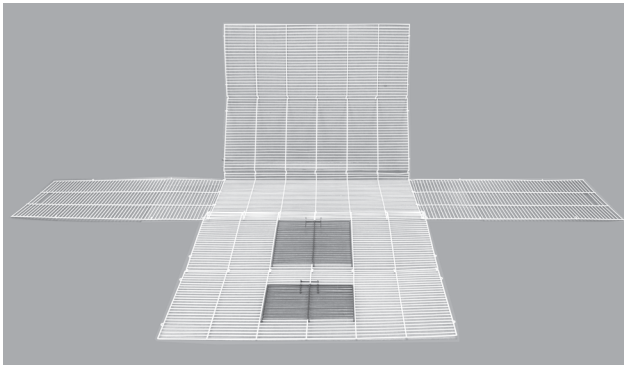
Long Mesh Ramp
#901619



Short Mesh Ramp
#901618

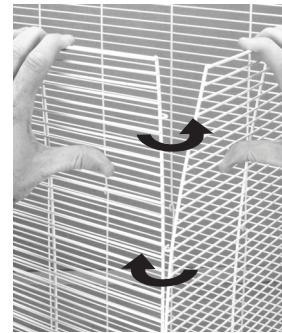
Step 1

Carefully unfold the front back and side panels.



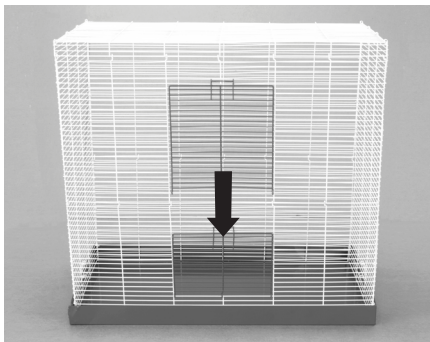
Step 2

Lock the right and left side panels to the front and back panels by connecting the wire hooks through the wire loops.



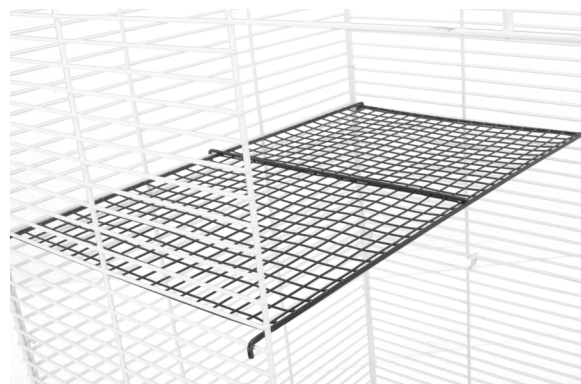
Step 3

Turn the Wire Cage Set upright and place it on top of the Metal Tray. Lock the Wire Cage Set to the metal Tray using the side wire latches. The side wire latches attach to the Wire Cage Set on the 6th wire up from the bottom.



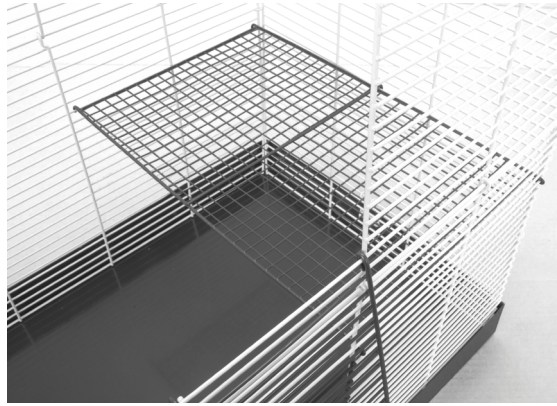
Step 4

Place the wire mesh shelf on the 20th wire from the top on the left side.



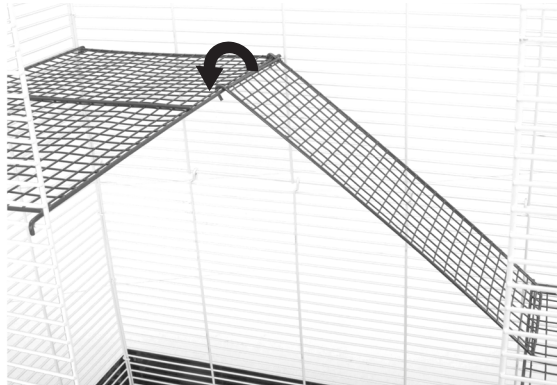
Step 5

Place another Wire Mesh Shelf on the 20th wire up from the bottom on the right side of the cage.



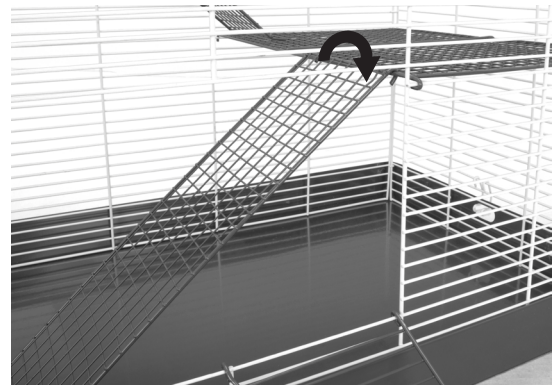
Step 6

Hook the Long Mesh Ramp onto the top Wire Mesh Shelf close to the back of the cage.



Step 7

Hook the Short Mesh Ramp onto the top Wire Mesh Shelf close to the front of the cage.

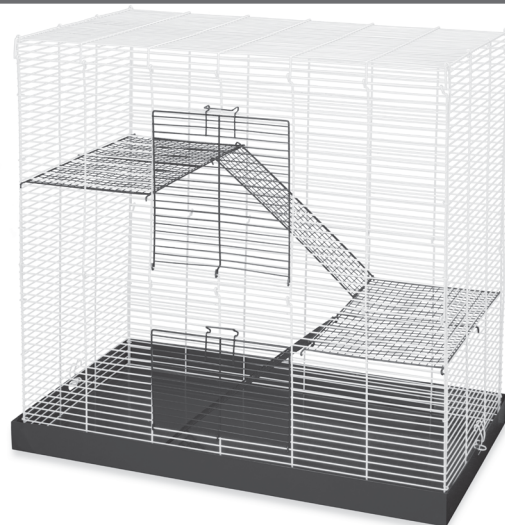


Step 8

Assembly Complete!

ware cares™

We care about the carbon pawprint we leave as a company and are committed to using recycled and recyclable material in the manufacturing of our packaging and pet products.



If you have any questions or concerns about this product contact our customer service department at 1-800-295-2243 Mon-Fri 8:00 - 4:00 MST or email us at hello@warepet.com

#3000665

Ware Mfg., Inc. claims copyright protection under U.S. and International Copyright Law in the attached sculptural work and in the content of this packaging. Copyright ©2019 Ware Mfg., Inc. All rights reserved.