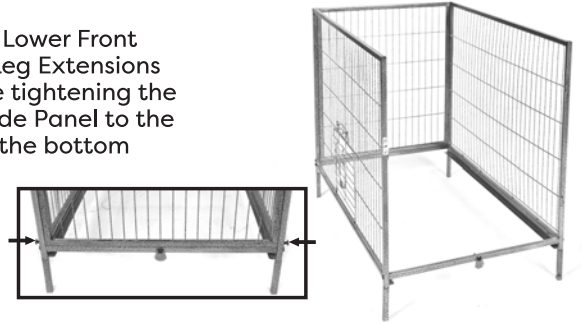


Step 1

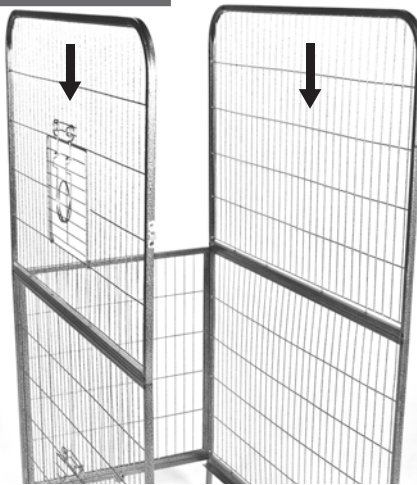


Connect the Lower Back Panel to the Lower Front Panel using the Side Bars. Insert the Leg Extensions into the Front and Back Panels before tightening the bolts into the Side Bars. Attach the Side Panel to the Left Side of the cage using 2 bolts at the bottom of the frame only.

TIP: Do not fully tighten bolts until all panels are in place.

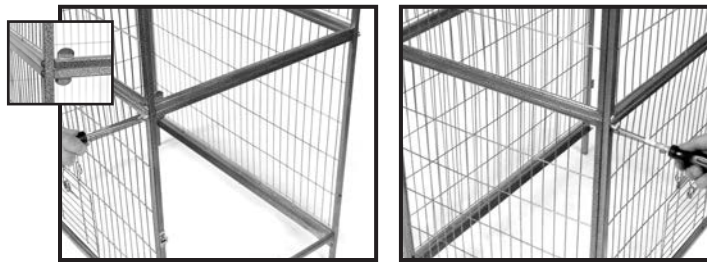


Step 2



Add the Upper Front Panel and Upper Back Panel to the lower portion of cage by inserting each panel into the slots provided. Attach by using Upper Side Bars on the right side of cage and Side Panels on the left side.

TIP: Do not fully tighten bolts until all panels are in place.



Step 3

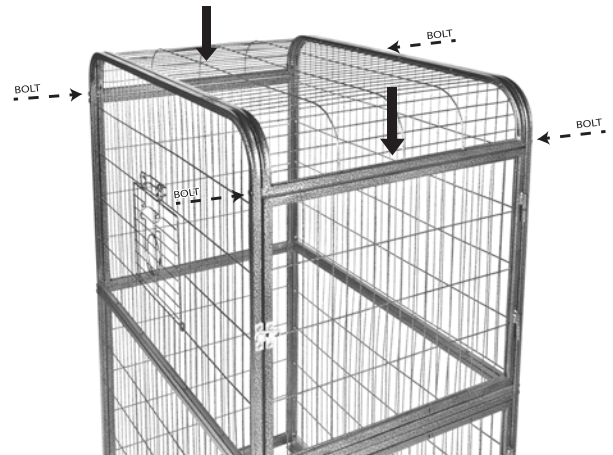


Attach the 2 Side Doors on the right side of the assembled cage by sliding the pegs on the doors into the hinges on the Back Panels. Lower the Roof Panel into place and attach with a bolt in each corner.

TIP: Tighten all bolts used in previous steps.



Slide Doors on Hinge



Step 4



Attach all 4 Casters by screwing in the threaded end into the bottom of the legs.



Step 6

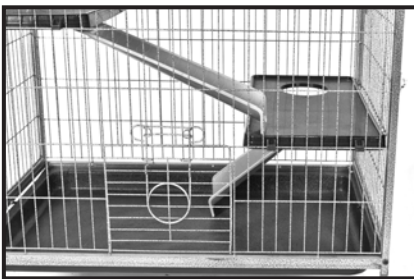


Slide the Plastic Tray in from the side along the channel in the bottom of the Front and Back Panels.

To attach the plastic ramps to the bottom side of the plastic shelves, snap them into the plastic clips on the underside of the shelves from the bottom, up.



Step 7



Place the assembled shelves and ramps in the cage through the side doors.

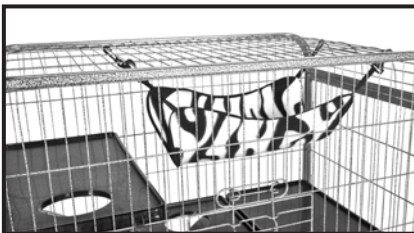
Attach the lower shelf with a hole and a short ramp to the 2nd wire up from the bottom on the right side of the cage. Then attach a shelf and a long ramp to the 4th wire up from the bottom with a long ramp resting on the lower shelf.



Next, attach the 3 middle shelves to the 1st wire up from the cage center. A shelf with a hole and a short ramp go in the middle with the ramp resting on shelf below.



Last, attach the upper shelf and long ramp to the 3rd wire up from the cage center on the right side with the ramp resting on the middle shelf.



Clip the hammock to the wire on the top panel of the cage in 4 corners. Make sure it is positioned for easy access for your pet.



ware cares™

We care about the carbon pawprint we leave as a company and are committed to using recycled and recyclable material in the manufacturing of our packaging and pet products.

If you have any questions or concerns about this product contact our customer service department at 1-800-295-2243 Mon-Fri 8:00 – 4:00 MST or email us at hello@warepet.com

Revised: 03-04-2020

#30001924

Ware Mfg., Inc. claims copyright protection under U.S. and International Copyright Law in the attached sculptural work and in the content of this packaging. Copyright ©2020 Ware Mfg., Inc. All rights reserved.