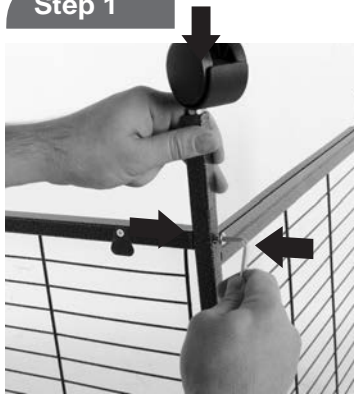
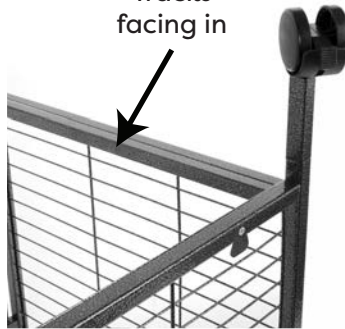


Step 1



Tracks facing in

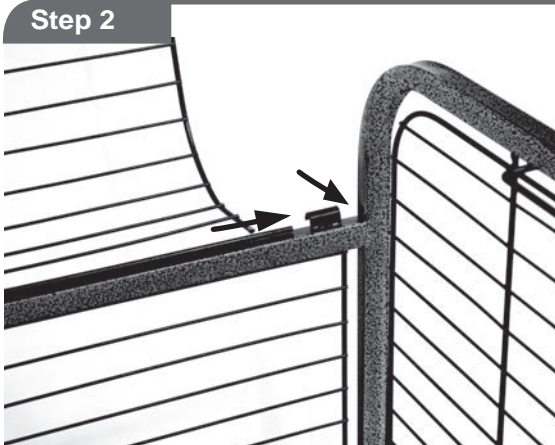


Insert a non-locking Wheel into the Right Side Panel so the holes line up, then insert Bolt. Align the hole in the bottom of the Back Panel with the hole in the Side Panel that you just placed the Bolt through. Using the Hex Wrench, screw in the Bolt through the Side Panel and into the Back Panel; repeat for the opposite Side Panel making sure the tabs face towards the outside and the tracks face towards the inside of the cage.

Attach the Front Panel in the same way, using the locking Wheels and making sure the door opens out.

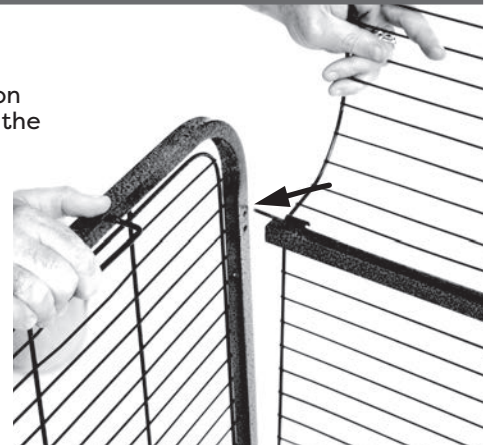
TIP: Do not tighten bolts fully until all panels are in place.

Step 2



Attach the Roof Panel by sliding the right rear lower wire extension under the support tabs and into the hole on the Side Panel.

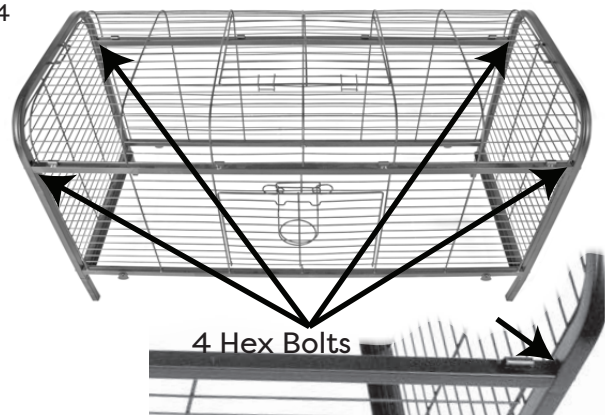
Slide the rest of the lower wire extension under the open tabs and into the hole in the left Side Panel.



Step 3



Attach side panel with 4 more hex Bolts and tighten all.

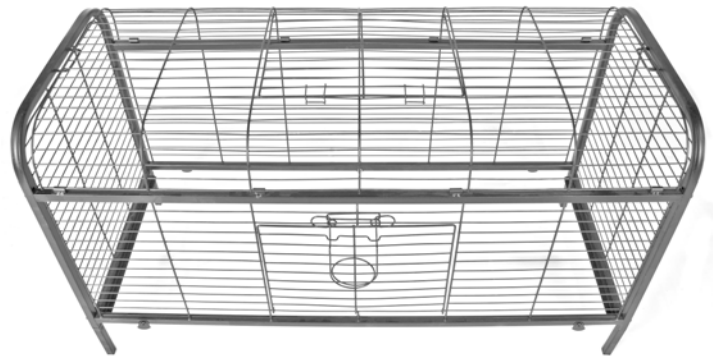


4 Hex Bolts

Step 4



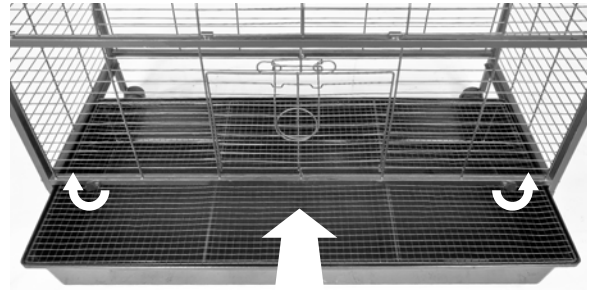
The Roof Panel should swing freely and close by latching into the front open tabs on the front top frame bar.



Step 5

Place the Floor Grate into the top of the Plastic Tray. Swing the locking tabs on the front bar up while sliding the Plastic Tray into the slots on the front and back frame bars.

★NOTE: if you house a guinea pig in this cage, you must remove the Floor Grate for your pet's safety.

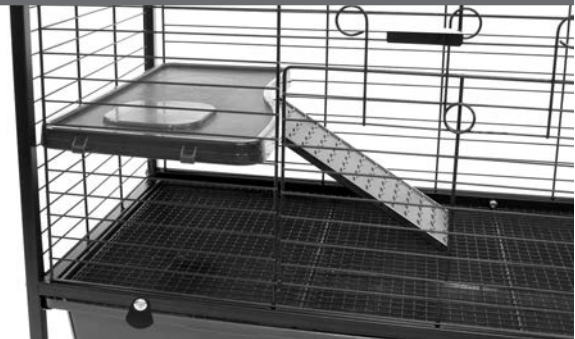


Step 6



Attach the plastic Ramp to the bottom side of the plastic Shelf by snapping into the plastic clips.

Place the assembled Shelf and Ramp in the cage through the door. Attach the Shelf and Ramp assembly to the 7th wire up from the bottom on the left side of the cage.



Step 7

Place Food Bowl on the Shelf, you and your pet are now ready to enjoy its new home.



ware cares™

We care about the carbon pawprint we leave as a company and are committed to using recycled and recyclable material in the manufacturing of our packaging and pet products.

If you have any questions or concerns about this product contact our customer service department at 1-800-295-2243 Mon-Fri 8:00 - 4:00 MST or email us at hello@warepet.com

Revised: 01-13-2022

#30001930

Ware Mfg., Inc. claims copyright protection under U.S. and International Copyright Law in the attached sculptural work and in the content of this packaging. Copyright ©2020 Ware Mfg., Inc. All rights reserved.