



HOME SWEET HOME

40" Cage

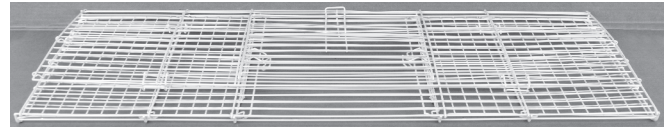
Assembly
Instructions

Item #02041

#30002041



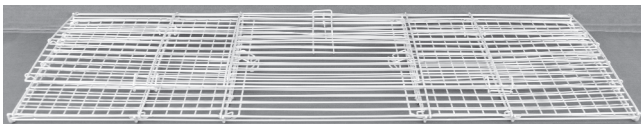
Cage Base
Blue - #900122
Purple - #900038
Teal - #900148



Cage Clips #900373
Cage Wire #900037

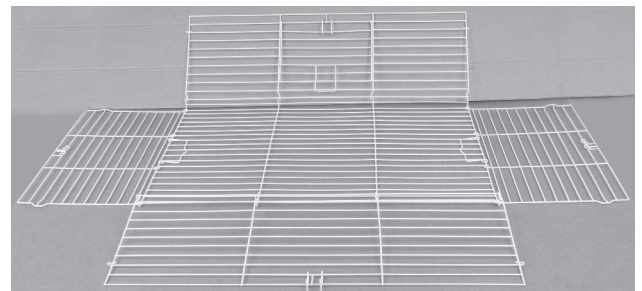
Step 1

Place the wire panels on a flat surface with the door facing up.



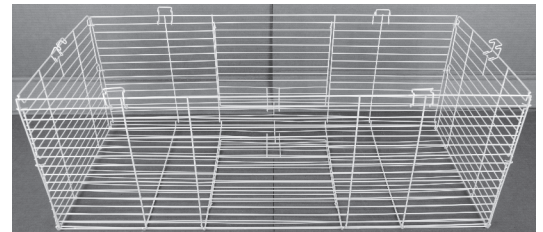
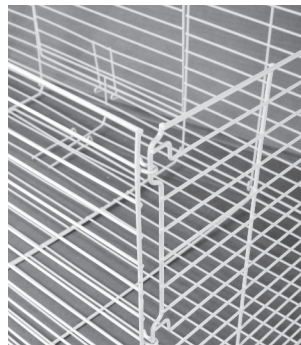
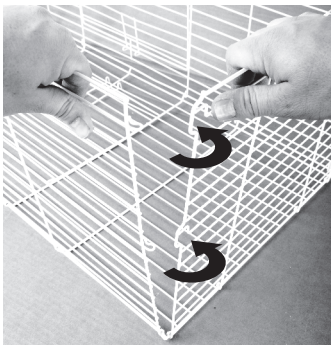
Step 2

Unfold the front, back, and side panels.



Step 3

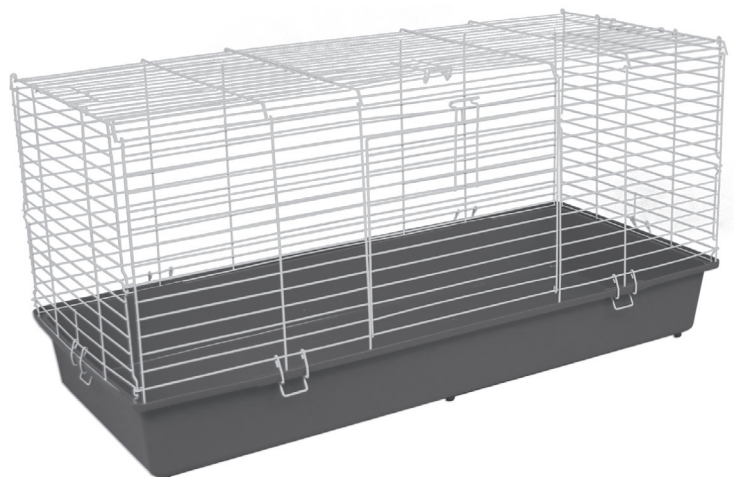
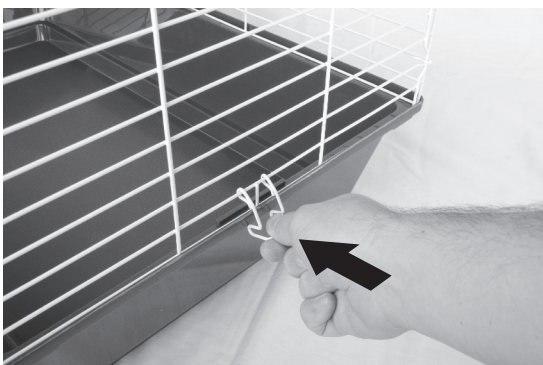
Lock the two side panels onto the back and front panels by snapping the wire hook onto the wire frame.



Note: If the wire hooks have become bent in shipping, carefully pry them open until they fit on the wire frame.

Step 5

Pick up the cage top and set it onto the plastic base. Use the attachment latches to lock the top to the base.



If you have questions or concerns about your new pet home, **DO NOT RETURN TO THE STORE.** Contact our customer service department at **1-800-295-2243** and we will help you with any problems, Mon-Fri 8:00 – 4:00 MST or through our website at www.waremfinc.com