

## ASSEMBLY INSTRUCTIONS

Item #02240  
Size 17.5"w x 5"d x 19.5"h  
44.45cm x 12.7cm x 49.53cm

**Step 1** Carefully unpack all parts. Remove bowl, bottle, wall attachment hardware and the yellow elevators.

**Step 2** Resecure all cubicles, the wheel, the mesh floor grate and sliding pull tray into C.U.<sup>3</sup> cage body.

**Tip: The Wheel Hub is easier to install if you separate the hanging bracket from the wheel. Simply pinch the center hub and separate the hanging bracket from the round wheel portion.**

**Step 3** Attach the food bowl onto the wire on the lower left so your furry friend has easy access to food.



**Step 4** Attach the locking water bottle by inserting the yellow water bottle bracket midway on the right side (see image for location) and insert the blue locking water bottle securely into the bracket.



**Tip: Make certain the water bottle is easily accessible to your pet.**

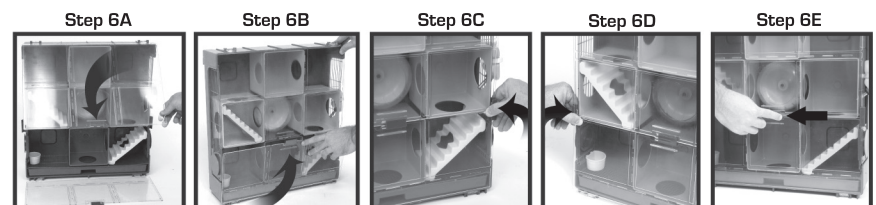
**Step 5** Insert the yellow C.U.<sup>3</sup> elevators on the lower right and into the middle level on the left side.



**Tip: Always make certain your pet has access to all levels by checking the arrangement of all openings in the cubicles. The maze configuration is easy for your pet to learn and navigate.**



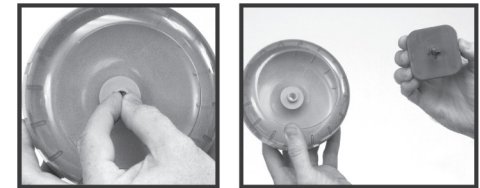
**Step 6** Close the top door and then close the bottom door. Lock the right cage clip and left cage clip onto both of the clear plastic front doors. Next slide the blue center door latch to the left to securely lock the two front doors. Your C.U.<sup>3</sup> is now ready to use.



### Cleaning Instructions:

CU<sup>3</sup> parts and accessories can be washed in lukewarm water and mild diswashing detergent. **RINSE THOROUGHLY**, dry and replace.

**Tip: The Wheel Hub is easier to install if you separate the hanging bracket from the wheel. Simply pinch the center hub and separate the hanging bracket from the round wheel portion.**



### For More Fun . . .

The C.U. Universal Tunnels (item #02217 and item #02260) can be connected to allow attachment of any other Critter Universe Cage. Simply remove the round blue locking Cage-N-Tunnel Caps and connect the C.U. Universal Tunnels and C.U. Cage directly to your C.U.<sup>3</sup> Cage.

C.U.<sup>3</sup> Cubicles (item #02250), Elevators (item #02255), X-Maze (item #02251) and Chew Cube (item #02252) can be attached at any level and in any available location. Your pet will love the ever changing cage environment.

**Tip: When adding accessories, make certain the food bowl and locking water bottle are always unobstructed and easily accessible to your pet.**



**WARE**  
Manufacturing Inc.

**Critter Universe<sup>3</sup> can be used as a desk/dresser top pet home or it can be attached to the wall. (Wall attachment instructions are on the opposite side)**

### Parts List:

|  |                   |         |                                      |            |         |
|--|-------------------|---------|--------------------------------------|------------|---------|
| 1 Cage Body                              | Dark blue         | #900500 | 1 Spinner Wheel Hub/Cage Attachment  | Dark Blue  | #900512 |
| 1 Sliding Plastic Tray                   | Dark blue         | #900501 | 1 Food Bowl                          | Yellow     | #900513 |
| 1 Mesh Floor                             | Dark Blue         | #900502 | 1 Water Bottle                       | Light Blue | #900514 |
| 1 C.U. <sup>3</sup> Cubicle              | Light Blue        | #900503 | 1 Locking Water Bottle Bracket       | Yellow     | #900515 |
| 1 C.U. <sup>3</sup> Cubicle              | Teal Green        | #900504 | 2 Locking Cage-N-Tunnel Caps         | Dark blue  | #900516 |
| 1 C.U. <sup>3</sup> Cubicle              | Lime Green        | #900505 | 1 Clear Top Door (Large)             | Clear      | #900517 |
| 1 C.U. <sup>3</sup> Cubicle              | Fluorescent Green | #900506 | 1 Clear Bottom Door w/ latch (Small) | Clear      | #900518 |
| 2 C.U. <sup>3</sup> Elevators            | Yellow            | #900510 | 2 Cage Clips                         | Dark Blue  | #900519 |
| 1 C.U. <sup>3</sup> Silent Spinner Wheel | Fluorescent Green | #900511 |                                      |            |         |

If your Critter Universe has been damaged in the shipping process, **DO NOT RETURN TO STORE**. Contact our customer service department at **1-800-295-2243** and we will help you with any problems, Mon-Fri 8:00 - 4:00 MST or by email at [www.waremfinc.com](http://www.waremfinc.com).

# Alternate Wall Mount Template

[C.U.<sup>3</sup> Attachment without locating studs inside wall]

This is only an alternate method. If you choose to use this installation you MUST check brackets regularly to make certain brackets remain firmly attached to the wall.

## 16" from the center of the left attachment to the right attachment

### WALL ATTACHMENT

**IMPORTANT:** Take some time to decide the perfect location for your pet's new home. For your pet's safety and comfort attach to an inside wall. Outside walls may conduct too much heat or cold and this could make your pet less comfortable. Also, do not locate your C.U.<sup>3</sup> cage where the cage is exposed to direct sunlight. This could cause a rise in temperature that is uncomfortable and unhealthy for you pet.

Use pencil to press through paper and make marks on wall

**Step 1** Position the template on the wall making certain the two attachment locations are level.

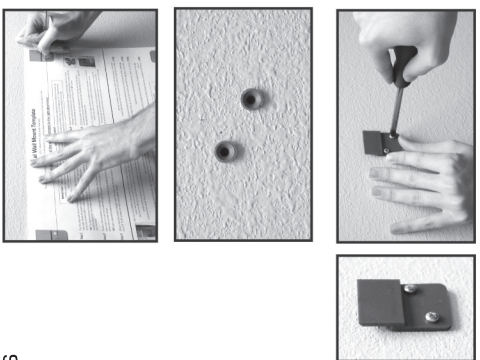
**TIP:** Use a standard level or measure down equal distance from the ceiling to make certain the template is level.

**Step 2** Drill 1/8" holes in the premarked location on the template.

**Step 3** Insert the 3/16" long wall anchors into the 3/16" 1-4-1 1/4" 1-4-1 1/4" holes drilled in Step 2.

**TIP:** Make certain the wall anchors are fully inserted into the wall and are flush.

**Step 4** Attach the blue plastic hanger to the wall with the open slot directed upward. Insert the 1/4" screws and attach blue plastic brackets to the wall.



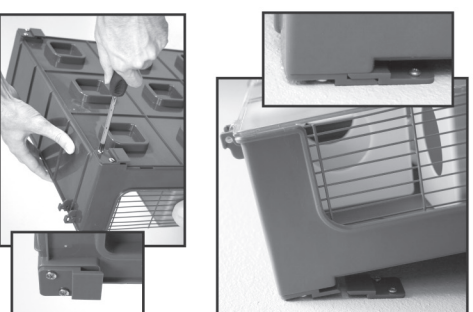
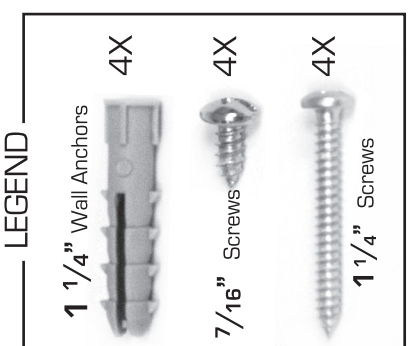
**Step 4** Attach the 2 remaining blue plastic hangers to the back of the C.U.<sup>3</sup> in the indicated areas at the top corners. Connect the blue plastic hangers with the open slot directed downward using the 4 short 7/16" screws.

**Step 5** Carefully position the fully assembled C.U.<sup>3</sup> directly over the blue plastic connectors previously attached to the wall. Carefully allow the C.U.<sup>3</sup> cage to fit into specially designed slots.

Your C.U.<sup>3</sup> cage can be easily removed and replaced onto the blue plastic wall connectors. Always make certain you have the plastic connectors properly aligned.

The doors are designed to open and provide access to the C.U.<sup>3</sup> Cage and your pet. The small lower door folds down and provides access to only the lower levels.

Always be cautious when opening the doors so your pet does not fall or escape from the cage.



## 16" from the center of the left attachment to the right attachment

[C.U.<sup>3</sup> Attachment using studs inside wall]

For safe & secure wall mounting, this is the preferred method.

**CAREFULLY LOCATE THE STUDS IN THE WALL TO ENSURE SAFE ATTACHMENT**

# Ideal Wall Mount Template

### WALL ATTACHMENT

**IMPORTANT:** Take some time to decide the perfect location for your pet's new home. For your pet's safety and comfort attach to an inside wall. Outside walls may conduct too much heat or cold and this could make your pet less comfortable. Also, do not locate your C.U.<sup>3</sup> cage where the cage is exposed to direct sunlight. This could cause a rise in temperature that is uncomfortable and unhealthy for you pet.

Use pencil or pen to press through paper and make marks on wall

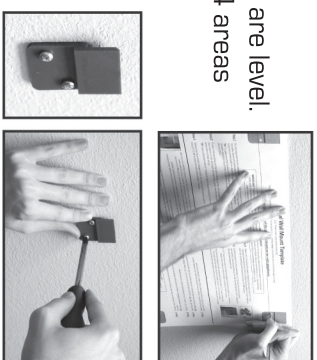
**Step 1** For the ideal wall mount installation, carefully locate the wood or metal support studs in the walls. Studs are positioned on 16" centers. Your C.U.<sup>3</sup> has been specially designed to be the perfect width to utilize the spacing of standard wall studs.

**TIP:** To determine the location of the studs in the walls, you can utilize any commercially available electronic stud finder or perform the standard tap procedure to find the solid stud location.

**Step 2** Position the template on the wall making certain the 2 attachment locations are level. Use a pencil or pen and push through the paper into the wall and mark the 4 areas where the screws will go.

**TIP:** Use a standard level or measure down equal distance from the ceiling to make certain the template is level.

**Step 3** Attach the blue plastic hangers with the open slot directed upward. Use 2- 1/4" screws for each blue plastic hanger.

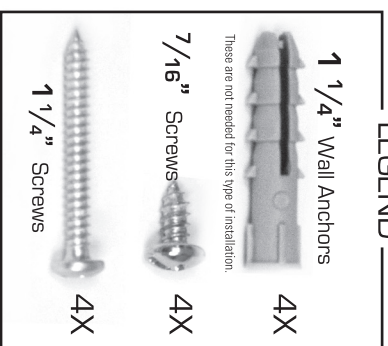
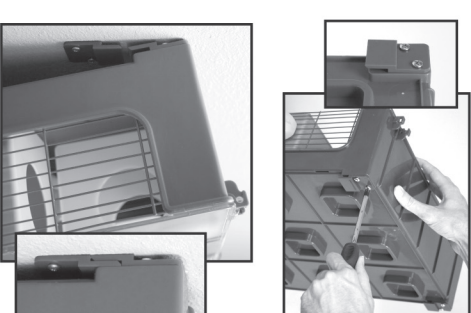


**Step 4** Attach the 2 remaining blue plastic hangers to the back of the C.U.<sup>3</sup> in the indicated areas at the top corners. Connect the blue plastic hangers with the open slot directed downward using the 4 short 7/16" screws.

**Step 5** Carefully position the fully assembled C.U.<sup>3</sup> directly over the blue plastic connectors previously attached to the wall. Carefully allow the C.U.<sup>3</sup> cage to fit into specially designed slots.

Your C.U.<sup>3</sup> cage can be easily removed and replaced onto the blue plastic wall connectors. Always make certain you have the plastic connectors properly aligned.

The doors are designed to open and provide access to the C.U.<sup>3</sup> Cage and your pet. The small lower door folds down and provides access to only the lower levels. Always be cautious when opening the doors so your pet does not fall or escape from the cage.



### LEGEND

1 1/4" Wall Anchors

4X

7/16" Screws

4X

1 1/4" Screws

4X