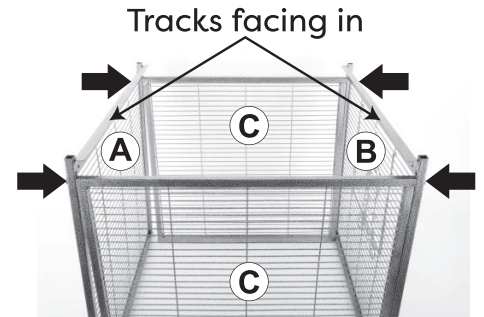
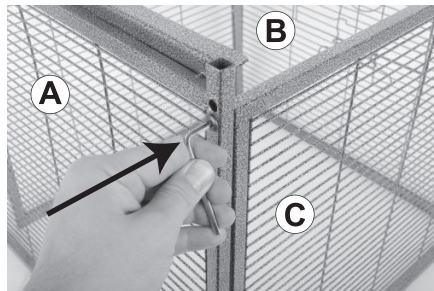


**Step 1**

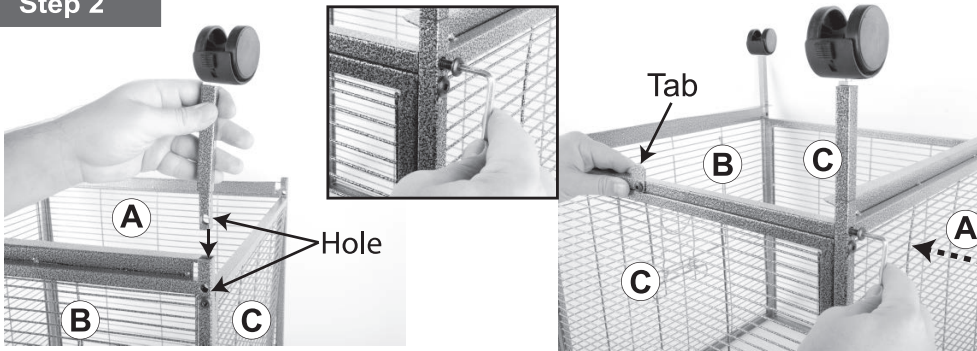
Connect the Bottom Back Wire (A) and the Bottom Front Wire (B) to the Side Wire (C) with the tracks facing up and towards the inside of the cage.

**Tip: Do not fully tighten bolts until all panels are in place.**

**Note: Cage is upside down for this step.**



**Step 2**

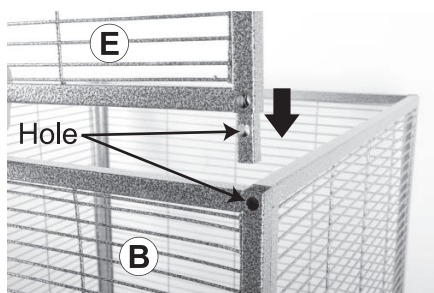


Insert the Casters into the Bottom Front (A) and Back (B) Wires, then connect both by screwing in bolts on each side (see inset image). Place the locking casters in the holes at the cage front. **Flip the cage so the wheels are on the ground.**  
**Tip: the tabs on the support bars should be facing towards the outside.**

**Step 3**

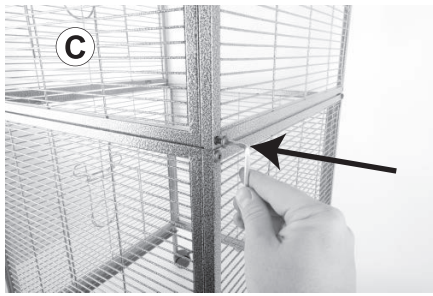
Add the Top Back Wire (D) and Top Front Wire (E) to the lower portion of the cage by inserting each panel into the slots provided. Then screw in the top bolts into the Lower Side Panels to connect upper and lower wires.

**Note: Make sure that the panels with the doors are placed on same side.**



#### Step 4

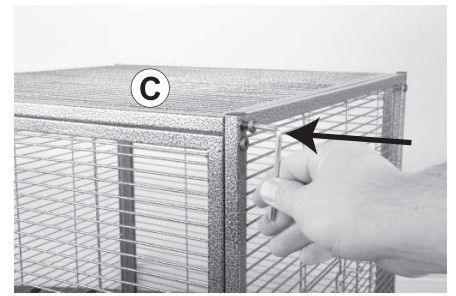
Connect the Side Wires (C) to the Top Back and Front Wires using 4 bolts for each Side Panel.



#### Step 5

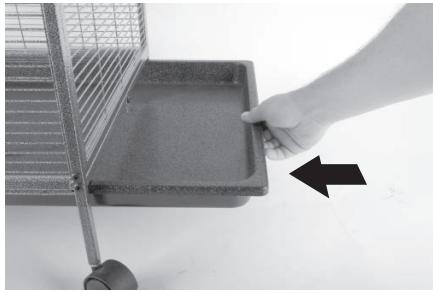
Lower the Top Wire into place and attach with bolts on each corner.

**Tighten all bolts used in previous steps.**



#### Step 6

Slide the Plastic Pull Pan into the slots located on the lower panels.



#### Step 7

Connect the ramps to the bottom of the shelves as shown in image.



#### Step 8

Place assembled shelves and ramps in the cage through the doors.

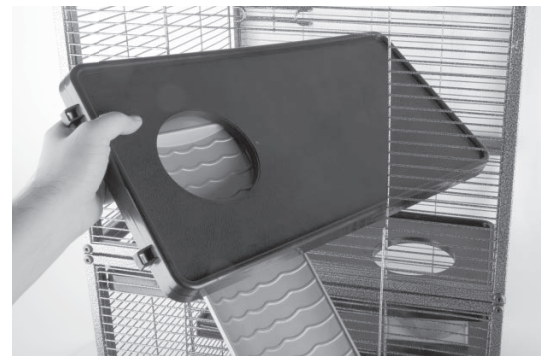
Next, attach the top shelf with a **Short Ramp** to the **14th bar up from the center bar at the back of the cage.**

Then, attach the middle shelf with a **Short Ramp** to the **3rd wire down from the center bar in the front.**

Attach the lowest shelf with a **Long Ramp** to the **15th bar up from the bottom on the lower Side Panels at the back of the cage.**

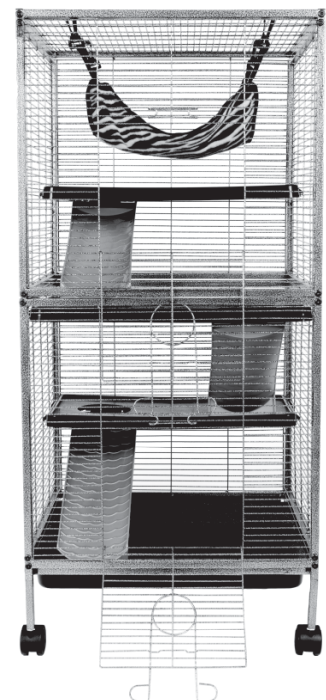


Attach Hammock to the roof of the cage.



#### Step 9

Assembly is now complete!



**ware cares™**

We care about the carbon pawprint we leave as a company and are committed to using recycled and recyclable material in the manufacturing of our packaging and pet products.

If you have any questions or concerns about this product contact our customer service department at 1-800-295-2243 Mon-Fri 8:00 – 4:00 MST or email us at [hello@warepet.com](mailto:hello@warepet.com)

Revised: 03-04-2020

#30016031

Ware Mfg., Inc. claims copyright protection under U.S. and International Copyright Law in the attached sculptural work and in the content of this packaging. Copyright ©2020 Ware Mfg., Inc. All rights reserved.