

# Natural Comforts

## 28" Chinchilla Cage

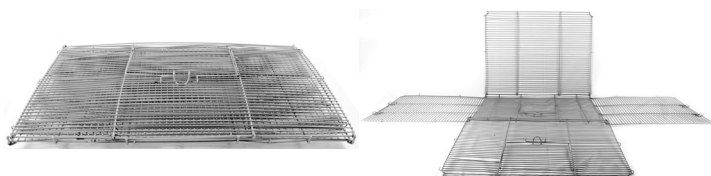
## Assembly Instructions

Item #16064



### Step 1

Place the wire panels on a flat surface with the door facing up. Unfold the front, back, and side panels

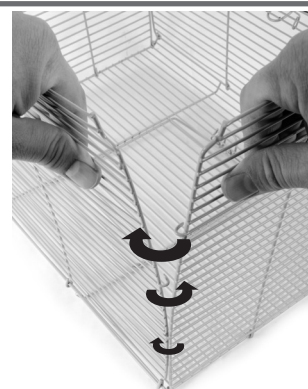


### Step 2

Connect the front cage panel (includes doorway) to the left side panel as shown. The "J" shaped wire hooks are specially designed to hook onto the side panel alternating back and forth. Then connect the front panel and the side panel again to create a woven connection joint.

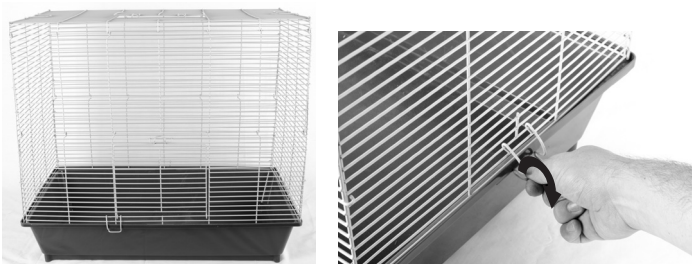
Repeat this connection between the remaining panels in each corner using the alternating "J" shaped hook.

HINT: Start by attaching bottom "J" hook and move up and attach top "J" shaped hook last.



### Step 3

Place the assembled wire top onto the base making sure the bottom of the wire panels rest securely along the top edge of the base. Secure the top wire panels to the base using the wire latch located on each side.



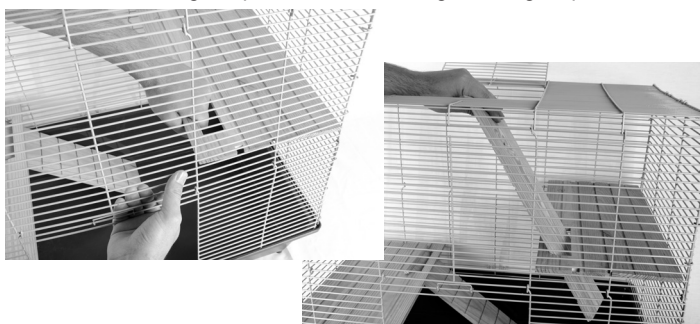
### Step 4

Insert the lower shelf through the cage front and place one side into the 7th wire up from the bottom on the left side of the cage. While gently pulling the front of the cage, slide the ramp into place on the front. Insert the short ramp into the shelf.

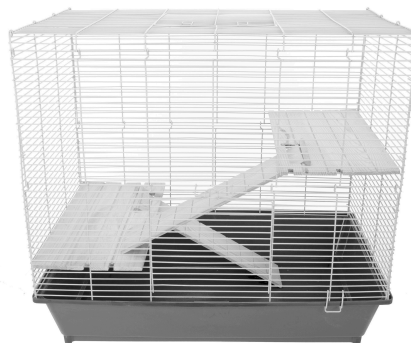


### Step 5

Insert the upper shelf through the cage front and place one side into the 22nd wire from the bottom on the right side. While gently pulling the front of the cage, slide the ramp into place on the front. Insert the long ramp into the shelf through the cage top.



### Assembly Complete!



#30016064  
Revision Date:  
4/8/19

If you have questions or concerns with the product, contact our customer service department at 1-800-295-2243 and we will help you with any problems, Mon-Fri 8:00 – 4:00 MST or email us at [hello@warepet.com](mailto:hello@warepet.com)

MADE IN CHINA  
to the design specifications of  
**WARE MFG., INC.**  
Phoenix, AZ 85009, USA  
[WWW.WAREPET.COM](http://WWW.WAREPET.COM)

**Critter  
WARE**